

CORNER RECORD

COUNTY OF Marin T. _____ R. _____ MERIDIAN CALIFORN

CORNER TYPE: GOVT. CORNER MEANDER RANCHO CONTROL OTHER

CORNER IDENTIFICATION — DATE OF VISIT June 1989

L6 - Monument per map 8 R.M 104
 C1 - Monument origin unknown - Tie: 8 R.M. 104
 L6 - Near #92 and #94 Lagoon Road, City of Belvedere
 C1 - Near #36 Cove Road, City of Belvedere

CORNER — LEFT AS FOUND FOUND AND TAGGED REESTABLISHED OBLITERATED CORNER REBUILT

PHYSICAL DESCRIPTION OF CORNER FOUND; EVIDENCE AND METHOD USED TO IDENTIFY OR REESTABLISH

L6 - Found 1" pipe with tag L.S. 2488
 Offset during repaving

C1 - Found standard street monument
 Raised after repaving

Original position perpetuated, distances not verified

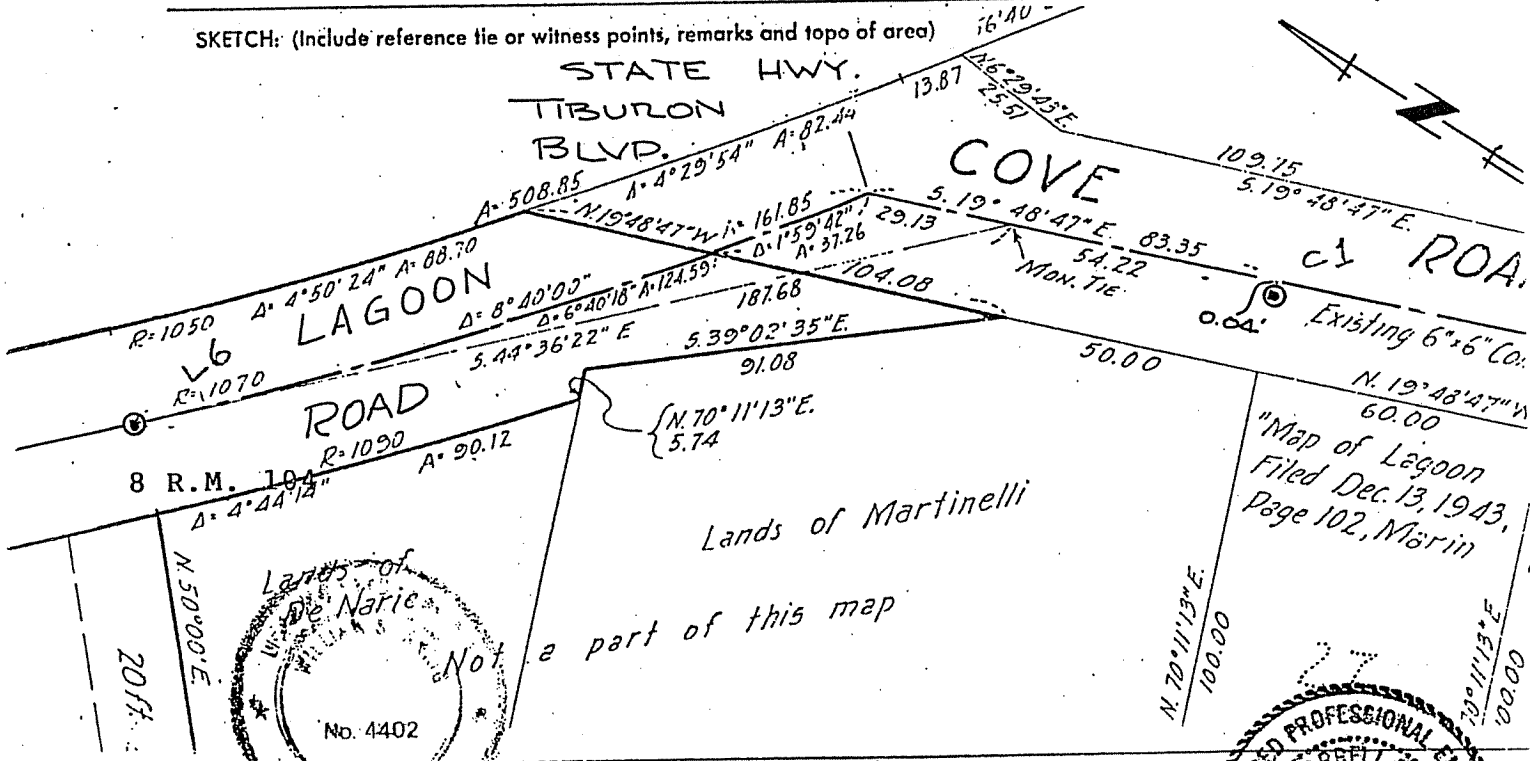
PHYSICAL DESCRIPTION OF MONUMENTS REBUILT OR PERPETUATED

Standard cast iron street monument

CALIFORNIA COORDINATE SYSTEM ORDER: FIRST SECOND THIRD

STATIONS USED: NGS (USC & GS) STATE COUNTY OTHER STATION _____ STATION _____

ZONE _____ ELEVATION _____ NORTHINGS (Y) _____ EASTINGS (X) _____



SURVEYOR'S CERTIFICATE

THIS CORNER RECORD WAS PREPARED BY ME OR UNDER MY DIRECTION IN CONFORMANCE WITH THE LAND SURVEYORS ACT ON NOVEMBER 1 1990

SIGNED: William J. Curtis
 L.S. or R.C.E. No.: L.S. 4402 Exp 9-30-93

COUNTY SURVEYOR'S CERTIFICATE

THE CORNER RECORD WAS REVIEWED AND EXAMINED AND FILED BY: _____ TITLE: _____

DOCUMENT No. _____

STATEMENT ON BACK OF SHEET

YES NO

